

Self-Adhering SPRAY BOOTH FLOOR FILM

Clear and White heavy-duty protective films keep floors clean.

For Concrete & Ceramic Tile Floors



Unrolling "Clear" film onto booth floor.



Unrolling "White" film onto booth floor.

Dry, non-skid surface!

SOLVENT BORNE & WATERBORNE COMPATIBLE

Product Performance Benefits

- ◆ Easy to apply. Reverse wound roll (adhesive to the outside) enables easy rolling laydown of the film to the floor.
- ◆ Self-adhering, stay-in-place protection
- ◆ Heavy duty mil guage plastic film. Resists tears, punctures and disintegration.
- ◆ **Dry, non-skid surface**
- ◆ Film resists temperatures up to 200°F (93.3°C).
- ◆ Eliminates cleaning floor with chemicals.
- ◆ Can be rinsed off with water (after application).
- ◆ **Remove every 60-90 days and apply anew.**

Concrete Floors

- ◆ Concrete floors must be sealed and dry prior to application of floor film.
- ◆ Sealing the floor: Follow manufacturer's directions for acid etching and epoxy coating of concrete floor.

Product Information

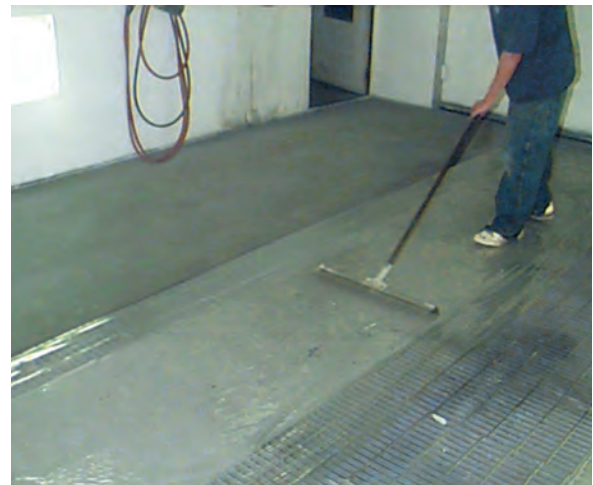
Part No.	Description	Units/Case
419	30" x 120' Roll (.76m x 36.6m) Clear Plastic (Reverse-wound roll)	1 Roll
421	48" x 200' Roll (1.22m x 60.9m) Clear Plastic (Reverse-wound roll)	1 Roll
454	48" x 200' Roll (1.22m x 60.9m) White Plastic (Reverse-wound roll)	1 Roll

Ceramic Tile Floors

- ◆ Ceramic tile floors must be clean and dry before application of floor film.

Product Information

Part No.	Description	Units/Case
422	48" x 200' Roll (1.22m x 60.9m) Clear Plastic (Reverse-wound roll)	1 Roll
455	48" x 200' Roll (1.22m x 60.9m) White Plastic (Reverse-wound roll)	1 Roll



Film can be rinsed off and squeegeed.